

Company Profile



Table Of **CONTENTS**

ABOUT KGARE INSURANCE BROKERS	3
MISSION STATEMENT	4
CORE VALUES	4
OUR STAKEHOLDERS	4
BRIEF HISTORY AND ORGANIZATIONAL STRUCTURE	5
DIRECTORS AND SHAREHOLDING	6
PRODUCTS	7
BROKING SERVICES	8
WHY KGARE INSURANCE BROKERS	9
BRANCH NETWORK	10

ABOUT KGARE INSURANCE BROKERS

Kgare Insurance Brokers (KGARE) is a fully-fledged insurance broking company regulated and licensed by NBFIRA. The business represents all insurers in Botswana and various offshore principals. Strategic partners are Jardine Lloyd Thompson Ltd. Kgare was formed in Botswana in the year 2000.

KGARE's main business thrust is on provision of Insurance Broking Services on Short Term Insurance, Group Business and Risk Management.

TECHNICAL PARTNERSHIPS

We partner with the following experienced companies on the project on risk management and technical support;

1. Loss Management Consultancy International (Pty) Ltd (LMCI)

LMCI is a Loss Adjusting and Risk Management Consultancy firm incorporated in Botswana and will provide amongst other the following technical support;-

- Risk Management
- Risk Surveys
- Valuations
- Loss and Claims Management Consultancy

The Managing Director of LMCI is a qualified Engineer

with vast experience in the field of Risk Management and Asset Valuations.

www.lossmci.com

2. Jardine Lloyd Thompson Group- London (JLT)

JLT is one of the world's leading companies in the provision of risk management, insurance and reinsurance services and it provides the following support;-

- Portfolio assessment and Design
- Portfolio placement and Reinsurance
- Complex Claims Management and Support
- Access to Offshore Markets like Lloyds of London and International Reinsurers

www.jlt.com



MISSION STATEMENT

To meet and satisfy the Risk Management and Insurance needs of the clients through excelled technical knowledge, professional conduct, expert delivery and dedicated personal service.

CORE VALUES

- Stewardship,
- Passion,
- Integrity,
- Service Excellence,
- Teamwork.

OUR STAKEHOLDERS

We represent all personal, commercial, corporate and group clients.

SHORT TERM INSURERS	GROUP LIFE INSURERS
Botswana Insurance Company	Botswana Life
Bryte Risk Financial Services	Liberty Life
Hollard Insurance Company	Barclays Life
Old Mutual	Bona Life
Phoenix Assurance	Hollard Life
	Metropolitan Life

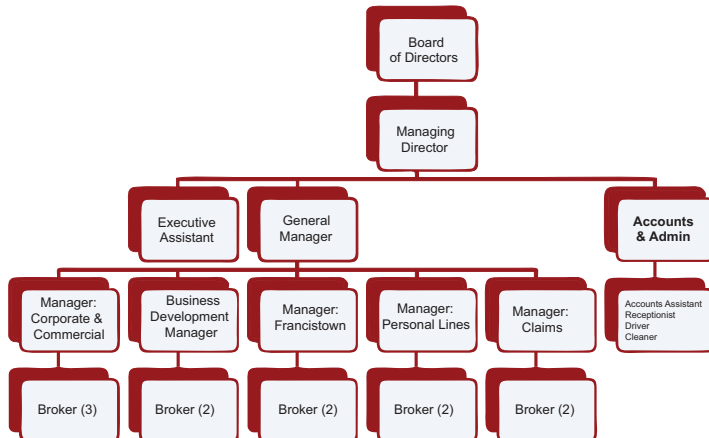


BRIEF HISTORY AND ORGANIZATIONAL STRUCTURE

History

Kgare Insurance Brokers was established from First Sun Alliance Insurance Brokers, which was formed in Botswana in the year 2000. The establishment of Kgare was motivated by management's desire to play a leading role in the indigenization of the insurance industry in Botswana. With effect from March 2016, shareholding was diversified to include citizens who now hold 51% ownership. Company Directors include Ms. Tebatso Lekalake (Board Chairperson), Ms. Tiny Kgatlwane, Ms. Keneilwe Mere and Ms. Kgaotsang Matthews.

Kgare Insurance Brokers Organogram



Qualified Staff

Kgare Insurance Brokers has a diverse and qualified workforce which includes locals and expatriates occupying various managerial and administrative posts.



COMPANY DETAILS (SHARE HOLDINGS & DIRECTORS)

- a) **Company Name** : Kgare Insurance Brokers Proprietary Ltd
 b) **Address** : P O Box 404349
 Gaborone, Botswana
 c) **Telephone Number** : (+267)3930024
 d) **Fax Number** : (+267) 3930025
 e) **E-mail** : enquiries@kgare.co.bw
 f) **Website** : www.kgare.co.bw
 g) **Legal Status** : Proprietary Limited
 h) **Company Reg. No.** : CO 2014/4865
 i) **Addresses** : Plot 138 First Sun House
 Gaborone International Finance Park
 Gaborone

Francistown Office
 Plot 15011
 Central Business District
 Francistown
 Tel: (+267) 244 1232
 Fax: (+267) 244 1233

- j) **Shareholders** : First Sun Alliance (Pty) Ltd
 : Tiny Kgatlwane
 : Tebatso Lekalake
 : Kgaotsang Matthews
 : Keneilwe Mere

- j) **Banking Details** : Stanbic Bank Botswana
 Fairground Branch
 First National Bank Botswana
 First Place CBD Branch



SHORT TERM PRODUCTS

Personal/Domestic Policies

House Owners
House Contents
Personal All Risks

Commercial Covers

Fire & Allied Perils
Business Interruption
Buildings Combined
Office Contents
Electronic Equipment
Business All Risks
Public Liability
Workers Compensation
Group Personal Accident
Money
Theft/Burglary
Goods In Transit
Accidental Damage
Fidelity Guarantee
Glass
Motor Insurance
Motor Traders

Special Covers

Professional Indemnity
Agriculture Insurance
Medical Malpractice
Contractors All Risks
Bankers Blanket Bonds

GROUP BUSINESS

Group Life & Disability
Group Funeral
Group Pensions
Critical Illness
Mortgage Life
Credit Life
Income Continuation Benefits

OTHER SERVICES

Enterprise-wide Risk Management
Client Training

BROKING SERVICES

We believe your portfolio requires technical support advice which, in practical terms, is an extension of your own management team.

The services offered are:

1. Risk Management Support
2. Claims Training
3. Insurance seminars
4. Negotiation and Placement of Insurance Program
5. Management of Insurance Program
6. General Advice on All Insurance Issues
7. Claims Management and Analysis

Our team can meet these needs and they possess the following skills:

1. Strong Technical Ability
2. Good Negotiating Skills
3. Good Reputation in the Market
4. Management Disciplines



WHY KGARE INSURANCE BROKERS ?

- We do not offer generic products but tailor-make covers to suit your specific needs.
- We negotiate for adequate coverage for our clients as well as achieving premium savings.
- We guide our clients towards the Risk Management Process and provide assistance with Risk Appraisals.
- We are a reputable Broker with high service standards.
- We are capable of serving you anywhere in Botswana through our Gaborone and Francistown Offices including our wide network of Agents.



BRANCH NETWORK

GABORONE

Plot 138 Gaborone International Finance Park

Tel: (+267) 3930024

Fax: (+267) 3930025

FRANCISTOWN

Plot 15011 CBD

Tel: (+267) 2441232

Fax (+267) 2441233

E-Mail: enquiries@kgare.co.bw



LEAVE IT TO US
KGARE
INSURANCE BROKERS



www.kgare.co.bw